

College of Management National Taiwan University

*Study in Taiwan
Explore beyond Asia*



國立臺灣大學





Quick Facts

Capital City : Taipei City
 Official Language : Mandarin Chinese
 Hokkien is also widely spoken.
 Area : 36, 193 km (approximately the same size as Belgium)
 Population : 23.5 million (as of April 2021)
 Climate : Subtropical, 16 C - 29 C
 Currency : New Taiwan Dollars
 (28 TWD=1 USD, as of April 2021)



Taiwan

Taiwan lies approximately 160 km off the southeastern coast of China and serves a cultural, transportation and trading hub for the Asia-Pacific region. As the inheritor of a long and rich political history, Taiwan is now a highly modernized country with diversified and vibrant culture.

National Taiwan University

Located in downtown Taipei, National Taiwan University is the oldest and most prominent university in Taiwan. Its history can be traced back to the early 20 century as Taihoku Imperial University, a school established by the Japanese colonial government in 1928. After World War II, the national government of the Republic of China (Taiwan) assumed administration of Taihoku University and renamed it as National Taiwan University in 1945.

Ranking among the most prestigious institutions of higher education in Asia, National Taiwan University is responsible for promoting the highest level of academic research and teaching. It currently ranks as 68 in the QS World University Rankings 2022 and 19 in the QS Asia University Rankings and has a student body that numbers approximately 31,000.

College of Management

As the No. 1 business education institution in Taiwan, the College of Management of National Taiwan University is committed to maintaining its position as the leader in the creation, dissemination, and application of knowledge in the field of management and business. All programs offered by the College of Management provide students with exceptional and rigorous academic and practical preparation for today's highly competitive business world. This excellent standard has been certified by accreditation from AACSB as well as through leading positions in national and international rankings.

AACSB (The Association to Advance Collegiate Schools of Business) is one of the most credible certification organizations in the world. Its core mission is to promote the certification of global management education quality. In addition to passing strict audit standards, after obtaining the first accreditation, it must be re-evaluated every five years to maintain accreditation qualifications. The College of Management, NTU obtained the AACSB accreditation for the first time in 2010; and achieved the re-accreditation in 2016 and 2021.

Business Administration	Accounting	Finance	International Business	Information Management
BBA MBA Ph.D.				

GMBA	EMBA	EIMBA
MBA		

Global MBA

GMBA is the English-taught MBA program aimed to transform promising, young professionals into global leaders. Students attend from more than 50 countries, with the average age of 30 years and average working experiences of 5 years. More than 30% of enrolled students for Fall 2020 were awarded scholarships or assistantships.

The program highlights include the following :

- Dual Degree Programs
- Free Chinese Classes for international students up to 1 year
- Exchange Programs
- Practical Consultation practices
- One-year/Part-time Options Case-based Studies

For more information, please visit : <https://gmba.ntu.edu.tw/en/>

Exchange Program

Every year, the College of Management accepts and enrolls approximately 175 college-level exchange students from more than 110 partner institutions and sends approximately the same number of students abroad to our partner institutions.

Buddy Program, Cultural Event, and Orientation

The goal of the NTU CoM Buddy Program is to help international students integrate comfortably into the NTU community and make the most of its resources during their stay in Taiwan. New international students will come across some cultural differences during their first few weeks in Taiwan, and our buddies will be here to help them overcome these difficulties by providing language assistance and multiple types of assistance and support.

Each semester, our buddies will arrange several cultural events in accordance with Taiwan's traditional festivals. Our orientation provides exchange students an opportunity to meet other fellow students and familiarize themselves with NTU campus as well as NTU's academic and administrative policies. This is a good opportunity for students to make friends with each other from around the world to share in their Taiwan experience.

Free Chinese Course

All NTU exchange/visiting students are eligible to take a NTU's General Chinese Course, which is a 3-credit course with 6 hours of Chinese language training in class per week. If students choose to attend this course, students will be enrolled in it automatically after they have completed the registration process and placement test. We currently offer courses at different levels. Students will be assigned to a course at their appropriate level based on the results from the placement test.



Summer Program

Innovation, Entrepreneurship & Sustainability Summer Program is an all-English program that is taught by distinguished National Taiwan University faculty members, who are internationally acclaimed scholars known for their research and influence. Our summer program will give students the unique opportunity to connect with leading pioneers and leaders in their respective fields in Taiwan.

Unique Course in The Best Business School in Taiwan

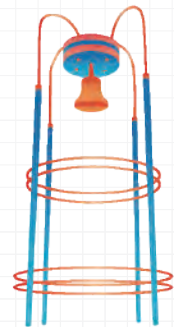
We design integrated courses to link strategic thinking with recent technology-related business trends for both business and non-business students. Students will gain business knowledge and explore Asian economic trends as well as experience the management practices in the best business school in Taiwan.

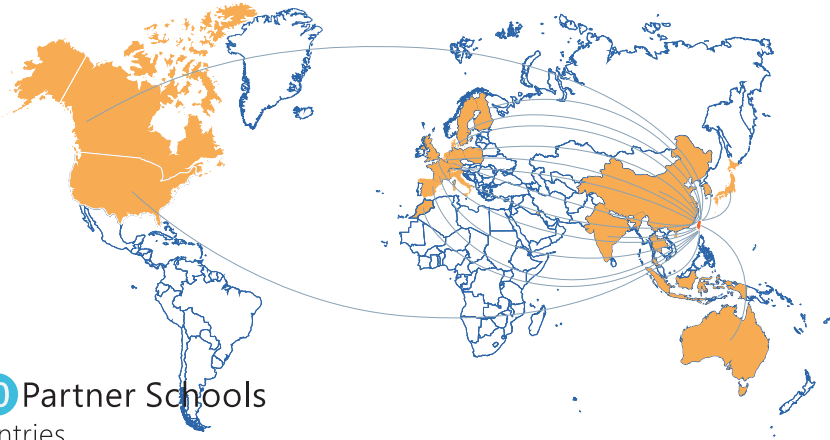
Cultural Events and Field trip

To supplement learning in class lectures, our summer program offers a number of off-campus activities, including cultural events and field trips. Students will explore the beauty and culture of Taiwan by visiting quite a few famous Taiwanese attractions.

Accommodation and Living

On-campus dormitories are available to program participants. The Da'an district of Taipei, where the school and dormitory are located, is its cultural and commercial heart. Taipei is a modern cosmopolitan metropolis with a lively and diversified face, filled with exuberance.





Over **110** Partner Schools
in 28 Countries

5 PALMES OF EXCELLENCE

by Eduniversal Business Schools Ranking

Ranked 68th

By The QS World University Rankings

Dual Degree Program

The College of Management currently offers several college-level and department-level dual-degree programs with these partner universities :

Ranked 19th

By The QS Asia University Rankings

College-level

- Waseda University
- Kyoto University
- Peking University
- The University of Texas at Dallas

International Business

- University of Illinois at Urbana-Champaign

Business Administration

- University of Illinois at Urbana-Champaign
- City University of Hong Kong

Finance

- Fordham University

Accounting

- City University of Hong Kong
- University of Illinois at Urbana-Champaign
- University of Pittsburgh
- Michigan State University
- Singapore Management University

Cost of Living

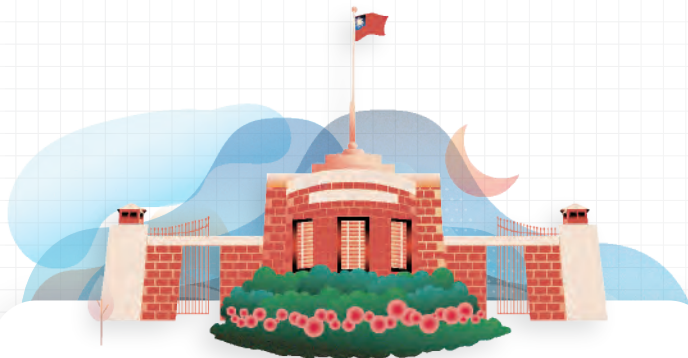
Items	Per Semester
On-campus Accommodation	USD 1,234
Textbooks / Stationery	USD 267
Campus Internet Access Fee	USD 16
Public Transportation	USD 214
Living Expense	USD 1,667
Total Estimated Costs	USD 3,398

Information Management

- University of Illinois at Urbana-Champaign



Note : the estimated cost may vary due to different lifestyles.



Office of International Affairs College of Management National Taiwan University

9th Floor, Building I, College of Management
No.85, Section 4, Roosevelt Road, Taipei 10617, Taiwan

www.management.ntu.edu.tw
ntucomexchange@ntu.edu.tw

Tel : +886 2 3366 1030
Fax : +886 2 3366 5411



國立臺灣大學 管理學院
College of Management
National Taiwan University

